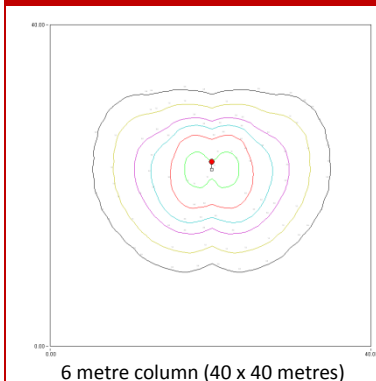


SOLAR STREET LIGHTS

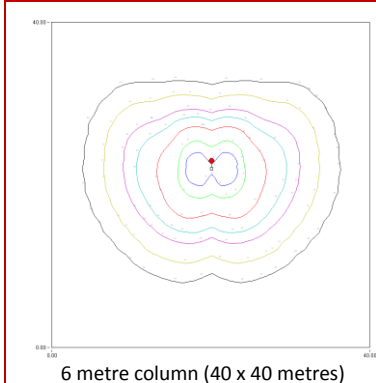
- Twin or single armed bulk head holder to fit existing poles in Nigeria
- Low pressure sodium vapour light - options for white light CFL
- Arms to support bulk head, solar panel and batteries
- Options for 75, 150 & 180 Wp solar arrays
- Charge controls incorporating lighting control with range of options for hours of running
- Batteries - 100 amp hour per lamp - maintenance free sealed deep cycled battery
- All connection brackets and accessories to be included

OPTION 1 – 18 W SOX-E STREET LIGHT



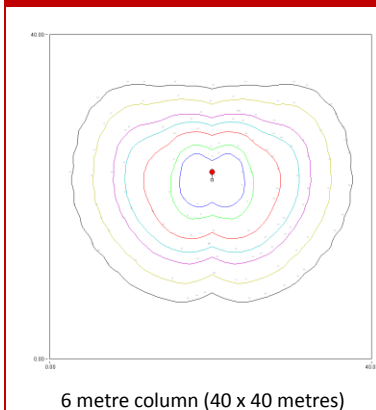
	Array size	Capability
Option 1.1	75 W	9-12 hours
Option 1.2	150 W	12 hours
Recommended Spacing – Single sided	Recommended Spacing – Staggered	Area covered by single light
27 m (37/km)	28 m (35/km)	600 m ²

OPTION 2 – 26 W SOX-E STREET LIGHT



	Array size	Capability
Option 2.1	75 W	6-8 hours
Option 2.2	150 W	11-12 hours
Option 2.3	180 W	12 hours
Recommended Spacing – Single sided	Recommended Spacing – Staggered	Area covered by single light
30 m (33/km)	31 m (32/km)	700 m ²

OPTION 3 – 36 W SOX-E STREET LIGHT



	Array size	Capability
Option 3.1	75 W	4-6 hours
Option 3.2	150 W	8-12 hours
Option 3.3	180 W	10-12 hours
Recommended Spacing – Single sided	Recommended Spacing – Staggered	Area covered by single light
32 m (31/km)	34 m (29/km)	800 m ²

Distributor: Inergy UK Ltd, Unit G, Kington Park, Malmesbury Rd, Chippenham, Wiltshire, SN15 5PZ, UK

Tel: Office: +44 (0)1249 654142 or UK Mobile: 07951 248255
 Web: www.inergyuk.com Email: sales@inergyuk.com