

**STP250S - 20/Wd**  
**STP245S - 20/Wd**

**SUNTECH**

Solar powering a green future™

250 Watt

**MONOCRYSTALLINE SOLAR MODULE**

**Features**



**High module conversion efficiency**  
 Up to 15.2%, through superior cell technology and leading manufacturing capability



**Positive tolerance**  
 Guaranteed positive tolerance 0/+5% ensures power output reliability



**Extended wind and snow load tests**  
 Entire module certified to withstand extreme wind (3800 Pascal) and snow loads (5400 Pascal) \*



**Self clean effect**  
 Anti-reflective, hydrophobic layer improves light absorption and reduces surface dust



**Excellent weak light performance**  
 Excellent performance under low light environments (mornings, evenings, and cloudy days)



**Suntech current sorting process**  
 All Suntech modules sorted and packaged by amperage, maximizing system output by reducing mismatch losses by up to 2%



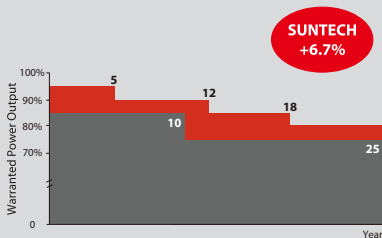
Certifications and standards:  
 IEC 61215, IEC 61730, conformity to CE



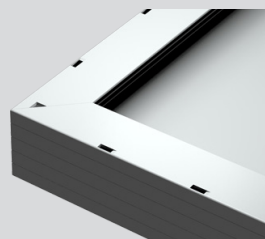
**Trust Suntech to Deliver Reliable Performance Over Time**

- World's No.1 manufacturer of crystalline silicon photovoltaic modules
- Unrivaled manufacturing capacity and world-class technology
- Rigorous quality control meeting the highest international standards : ISO 9001: 2008, ISO 14001: 2004 and ISO17025: 2005
- Tested for harsh environment (salt mist and ammonia corrosion testing: IEC 61701, DIN 50916: 1985 T2)

**Industry-leading Warranty based on Pnom**



- Based on nominal power (Pnom)
- 25-year transferrable power output warranty: 5 years/95%, 12 years/90%, 18 years/85%, 25 years/80% \*\*
- Warrants 6.7% more power than the market standard over 25 years
- 10-year material and workmanship warranty



**Superior Frame Design**

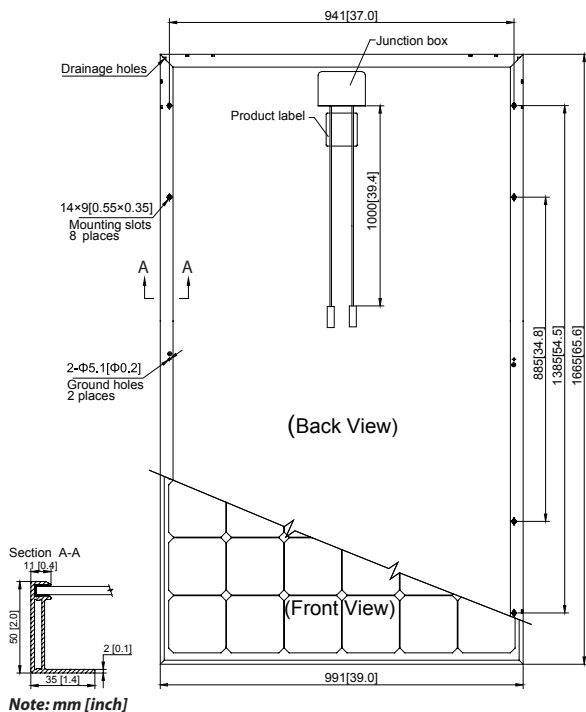
Specially designed drainage holes and rigid construction prevent frames from deforming. Screwless frame design for a long term durability.



**Most Modern IP67 Rated Junction Box**

Supports any orientation installation. High performance low resistance connectors ensure maximum module power output for highest energy production.

\* Please refer to Suntech Standard Module Installation Manual for details.  
 \*\* Please refer to Suntech Product Warranty for details.



## Electrical Characteristics

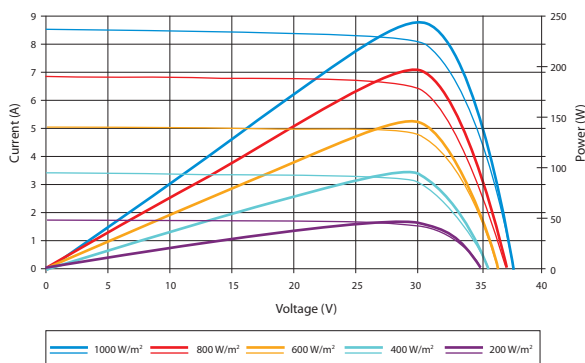
STC	STP250S-20/Wd	STP245S-20/Wd
Optimum Operating Voltage (Vmp)	30.7 V	30.5 V
Optimum Operating Current (Imp)	8.15 A	8.04 A
Open Circuit Voltage (Voc)	37.4 V	37.3 V
Short Circuit Current (Isc)	8.63 A	8.52 A
Maximum Power at STC (Pmax)	250 W	245 W
Module Efficiency	15.2%	14.8%
Operating Module Temperature	-40 °C to +85 °C	
Maximum System Voltage	1000 V DC (IEC) / 600 V DC (UL)	
Maximum Series Fuse Rating	20 A	
Power Tolerance	0/+5%	

STC: Irradiance 1000 W/m<sup>2</sup>, module temperature 25 °C, AM=1.5  
 Best in Class AAA solar simulator (IEC 60904-9) used, power measurement uncertainty is within +/- 3%

NOCT	STP250S-20/Wd	STP245S-20/Wd
Maximum Power at NOCT (Pmax)	183 W	180 W
Optimum Operating Voltage (Vmp)	28.0 V	27.9 V
Optimum Operating Current (Imp)	6.52 A	6.45 A
Open Circuit Voltage (Voc)	34.4 V	34.3 V
Short Circuit Current (Isc)	6.96 A	6.89 A

NOCT: Irradiance 800 W/m<sup>2</sup>, ambient temperature 20 °C, AM=1.5, wind speed 1 m/s  
 Best in Class AAA solar simulator (IEC 60904-9) used, power measurement uncertainty is within +/- 3%

## Current-Voltage & Power-Voltage Curve (245S-20)



Excellent performance under weak light conditions: at an irradiance intensity of 200 W/m<sup>2</sup> (AM 1.5, 25 °C), 95.5% or higher of the STC efficiency (1000 W/m<sup>2</sup>) is achieved

## Mechanical Characteristics

Solar Cell	Monocrystalline 156 × 156 mm (6 inches)
No. of Cells	60 (6 × 10)
Dimensions	1665 × 991 × 50 mm (65.6 × 39.0 × 2.0 inches)
Weight	19.8 kgs (43.7 lbs.)
Front Glass	3.2 mm (0.13 inches) tempered glass
Frame	Anodized aluminium alloy
Junction Box	IP67 rated
	TUV (2Pfg1169:2007), UL 4703, UL 44
Output Cables	4.0 mm <sup>2</sup> (0.006 inches <sup>2</sup> ), symmetrical lengths (-) 1000 mm (39.4 inches) and (+) 1000 mm (39.4 inches)
Connectors	RADOX® SOLAR integrated twist locking connectors

## Temperature Characteristics

Nominal Operating Cell Temperature (NOCT)	45±2°C
Temperature Coefficient of Pmax	-0.45 %/°C
Temperature Coefficient of Voc	-0.34 %/°C
Temperature Coefficient of Isc	0.050 %/°C

## Packing Configuration

Container	20' GP	40' HC
Pieces per pallet	21	21
Pallets per container	6	28
Pieces per container	126	588

## Dealer information



Inergy UK Ltd, Unit G, Kington Park, Malmesbury Rd, Chippenham, Wiltshire, SN15 5PZ, UK  
 Tel: Office: +44 (0)1249 654142 or UK Mobile: 07951 248255  
 Web: [www.inergyuk.com](http://www.inergyuk.com) Email: [sales@inergyuk.com](mailto:sales@inergyuk.com)